

AUTOPILOT

MODEL KAP-833

ONWA®



- ◆ Locks onto current course when auto is engaged
- ◆ Preset course selector enables easy
- ◆ Rudder and counter rudder controls enable autopilot to be customized to a vessel's specific steering characteristics
- ◆ Off course alarm warns when vessel is not responding to autopilot control
- ◆ Navigate with designed route of GPS Navigator
- ◆ Timer can be used as an adjustable watch alarm
- ◆ Gyro compass input with Gyro converter unit (optional)
- ◆ Designed to have up to three remote steering position

KAP-833

SPECIFICATION OF KAP-833

● Functions

1. Auto mode :
 - Input course directly from numeric keypad
 - Change course by panel dial knob
 - Change course by fix or handheld remote (optional)
2. Manual mode
3. Power Steering mode
4. GPS Navigation mode
5. Remote mode

● Steering system

Hydraulic or electro-mechanical

● Heading sensor

1. Fluxgate compass (Standard)
2. Compass top sensor (option)
3. Gyro compass thru gyro converter (option)

● Nav sensor

GPS, Loran outputting data in NMEA0183

● Adjustment of parameters

Weather, Rudder and Counter Rudder from panel.
Trim, Rudder Ratio and Rudder Limit from PCB pre-set

● Alarm

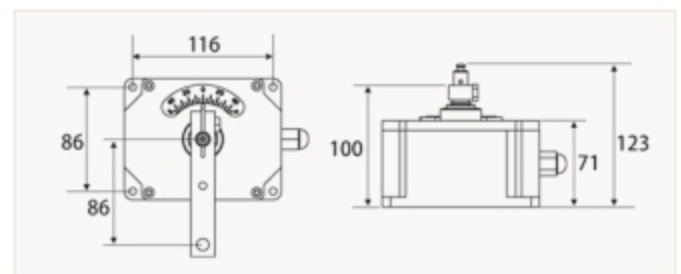
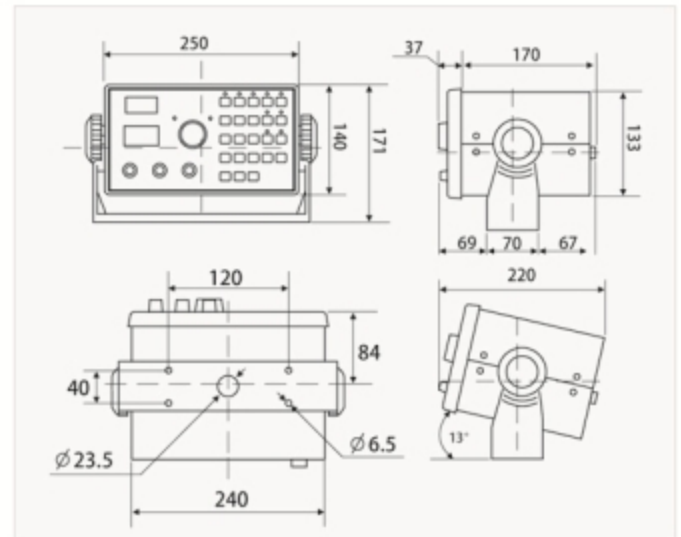
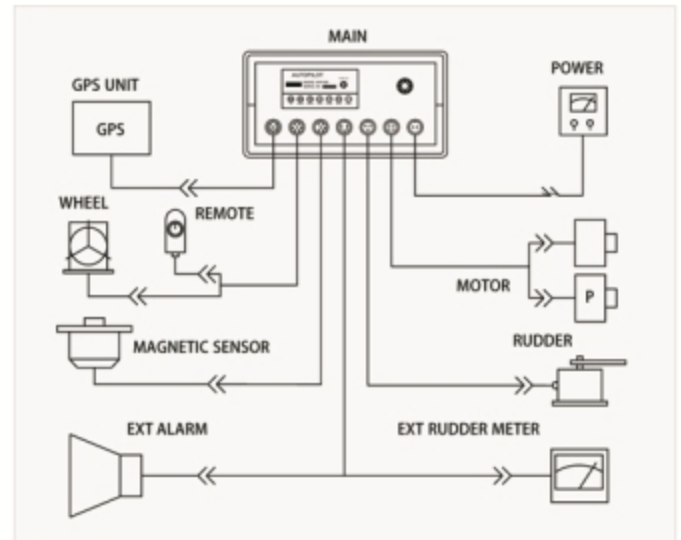
1. Off course alarm : 1 ~ 180 degree adjustable
2. Watch alarm : 1~60 adjustable watch alarm.
Will trigger external alarm if not reset within 60 sec.
3. NMEA data alarm : Trigger when lost of NMEA data from GPS Navigator in GPS Navigation mode.

● Power Supply

12V or 24VDC, Standby 0.4A, Auto mode 1.0A for control unit only.

● Equipment List

- KAP-833 control unit
- Heavy duty rudder feedback unit
- Fluxgate compass
- Standard accessories
- Standard Installation Kit
- Operator manual



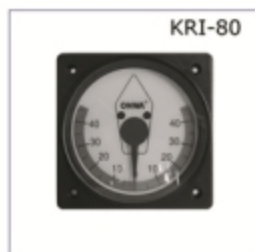
Options



Compass Top Sensor



Outdoor Fluxgate Compass



Rudder Indicator



Hand Remote Control



Electric Steering Helm



Gyro to NMEA Converter