

# DESCRIPTION OF KAGC-XX

## Technical Specification

Antenna Types: Outdoor installation

Center Frequency: 1575.42MHZ  $\pm$ 5MHZ

Power supply: DC 6V—13.5V

Current:  $\leq$ 30MA

Impedance: 50  $\Omega$

Gain: 30DB  $\pm$ 1DB

VSWR: 1:  $\leq$ 1.5

Noise figure:  $\leq$ 1.5

Temperture: -40—+85°C

Axial ration:  $\leq$ 4DB

Electronic compass:

Precision:

$\pm$ 3° degrees with proper calibration without nearby magnetic disturbance(typical);

$\pm$ 5° degrees extreme northern and southern latitudes

Resolution: 1°

Antenna Cable: 10M

The antenna has a strong anti-jamming performance、short positioning time、high Accuracy and good waterproof performance

## Output

NMEA0183 2.0

KA-GC01

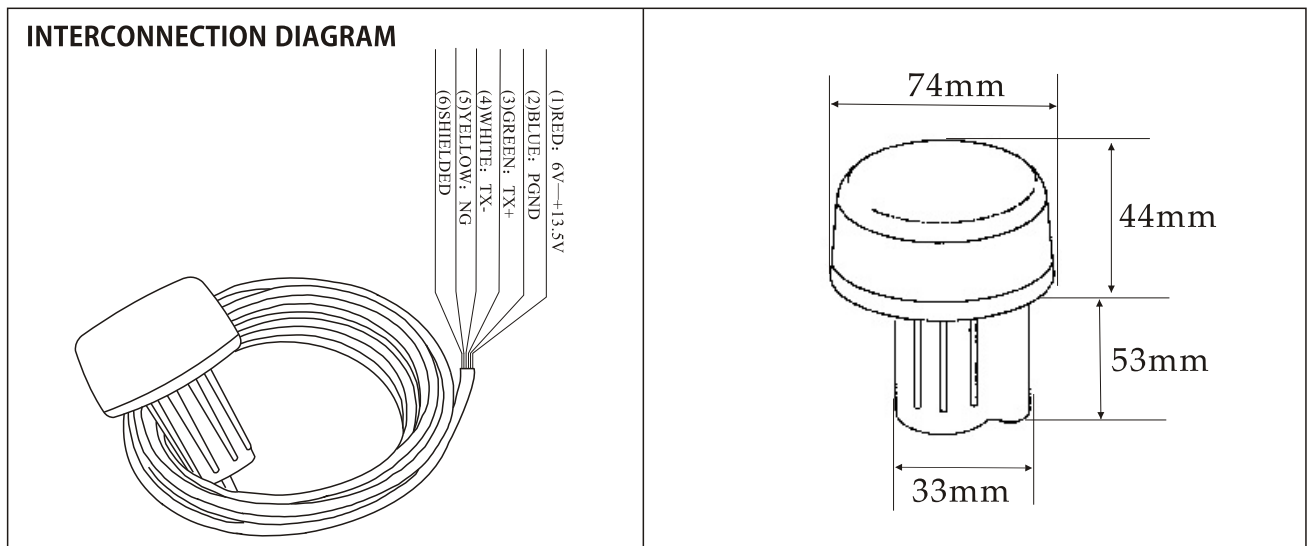
GPRMC GPGSA GPGGA GPVTG GPHDT(1HZ)

KA-GC05

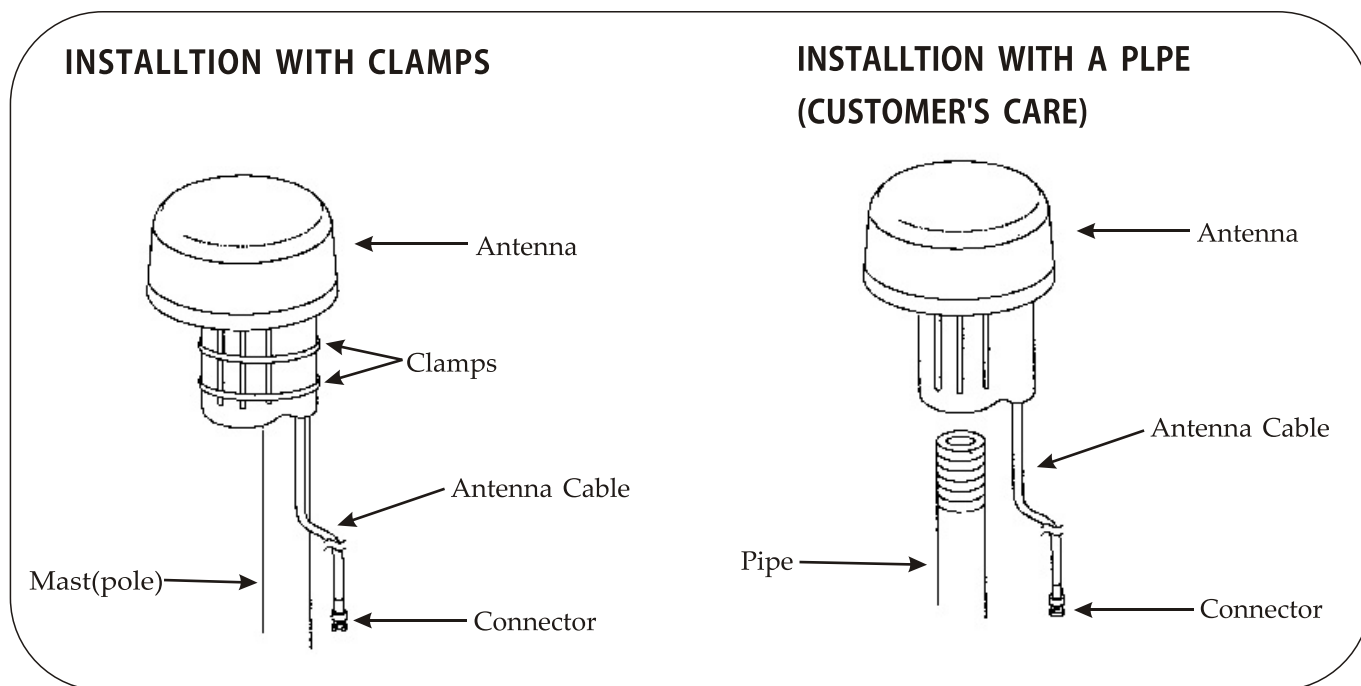
GPRMC GPGSA GPGGA GPVTG GPZDA GPHDT(5HZ)

KA-GC10

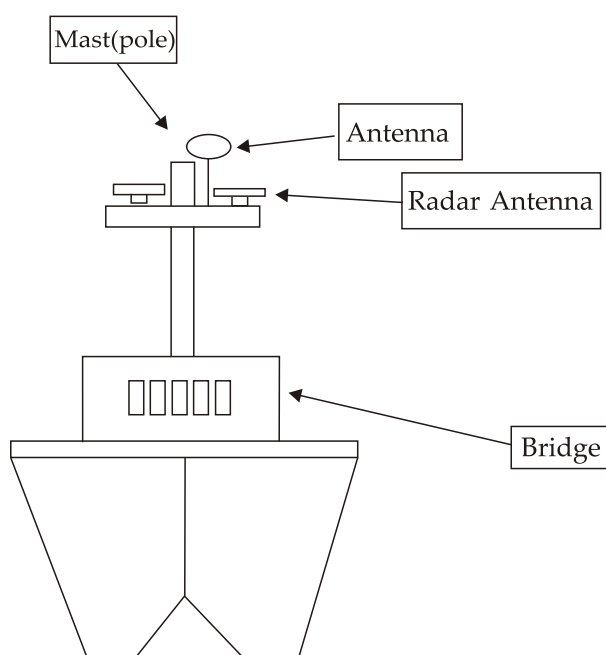
GPHDT(10HZ)



## INSTALLTION WITH CLAMPS



- Please install the KA-GCXX outside, ensure that the receiving GPS not be covered.
- Keep the length of the cable in mind when selecting a mounting location.
- It should be far away from their minimum 1 meters to prevent the influence for iron and steel or other magnetic materials.
- use not magnetic screws for fixed the fluxgate sensor unit.
- Select the vertical way of positions for installation.



Example of antenna installed above all superstructures