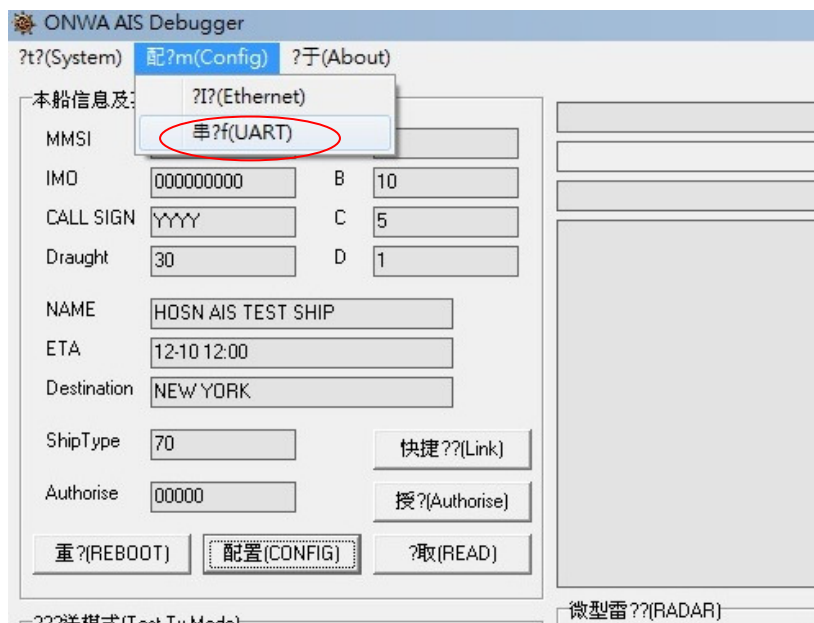
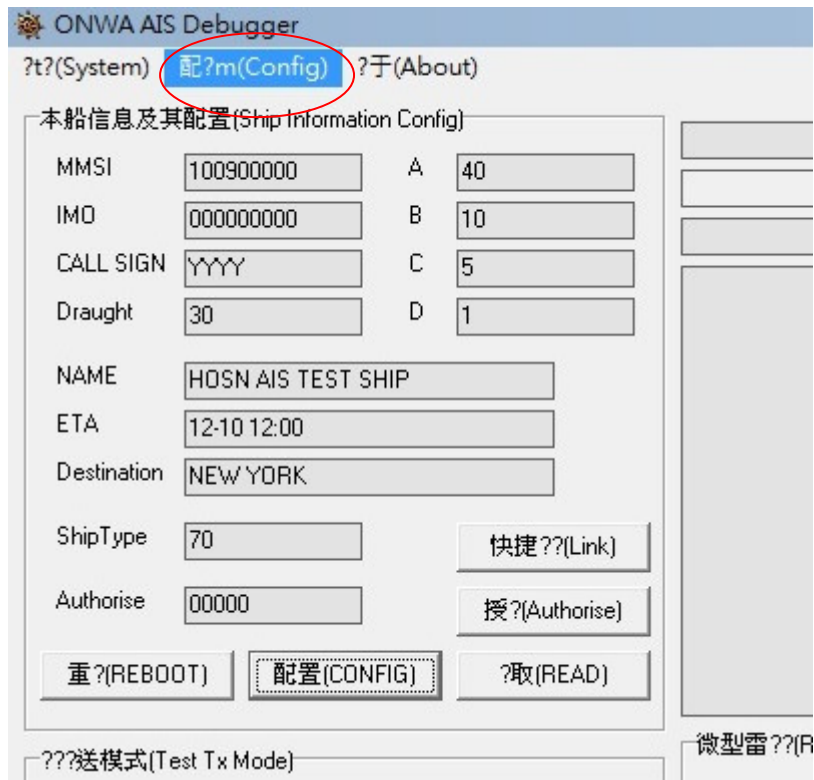
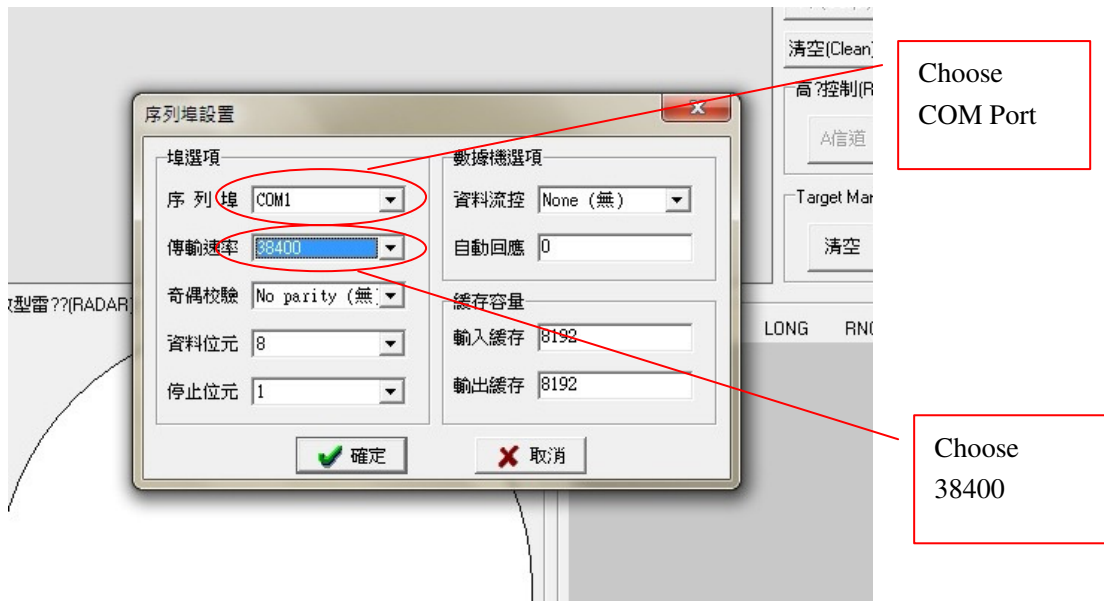


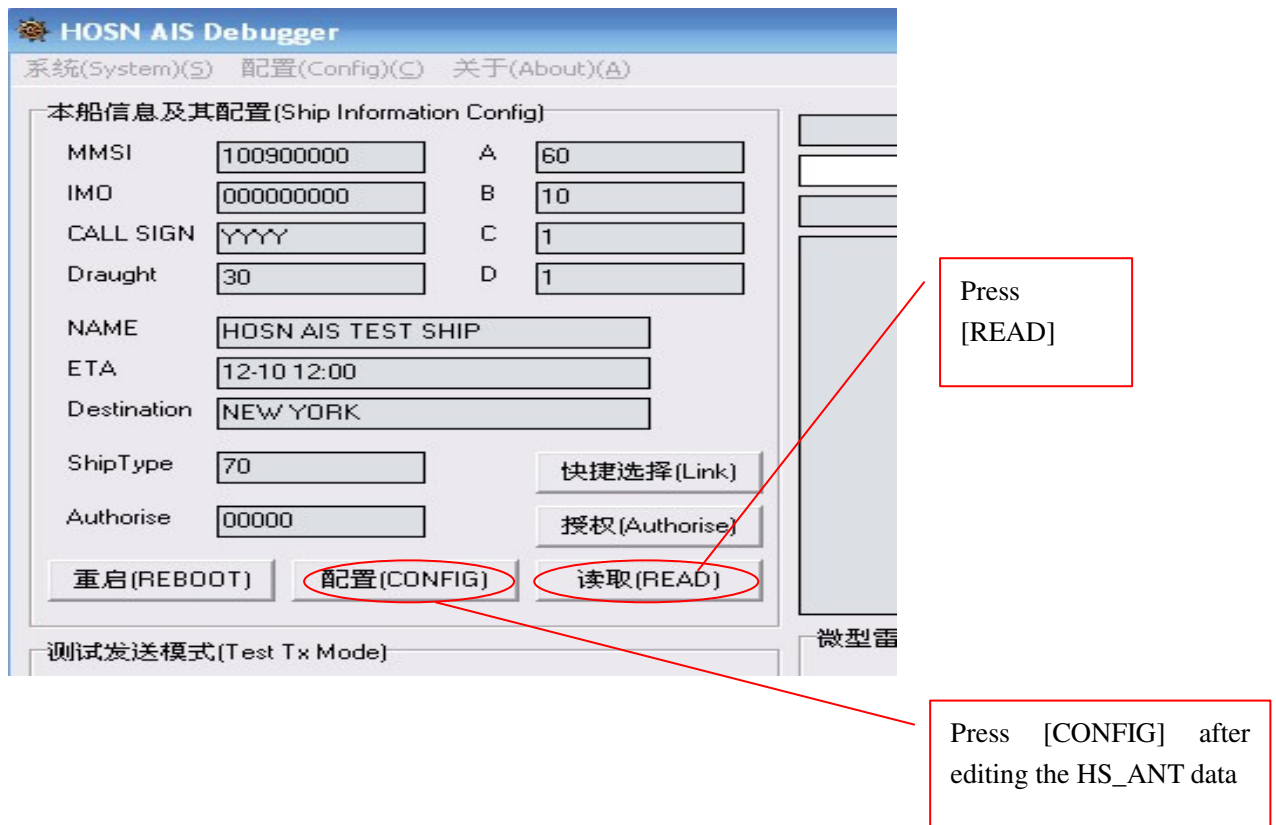
Programming of KS33NT

- 1) Connect KS33NT to PC Com Port
- 2) Run “Onwa AIS Debugger.exe”
- 3) Select [Config -> UART] to setup the Com Port and its baud rate

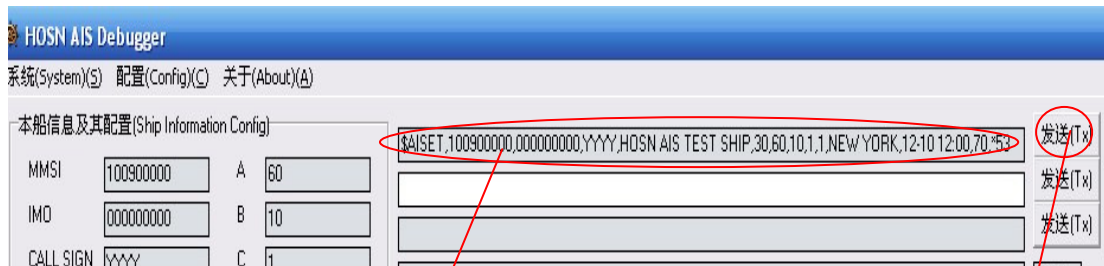




4) Press [Read] to read the data from KS33NT



5) Press [CONFIG] after finish editing data of KS33NT.



A string generated after pressing [CONFIG]

Press [Tx] to write the edited data into KS33NT

6) Press [Tx] to write the edited data into KS33NT.

MMSI	100900000	A	60
IMO	000000000	B	10
CALL SIGN	YYYY	C	1
Draught	30	D	1

Note :

A) In above diagram A=60 stand for KS33NT transmit interval is $3 * 60 = 180$ seconds, you can change any interval.

B) B=10 stand for the time delay of satellite fix of every time you switch on KS33NT, B=10 is delayed 10 second

C) Factory default C & D = 1, not recommend to change